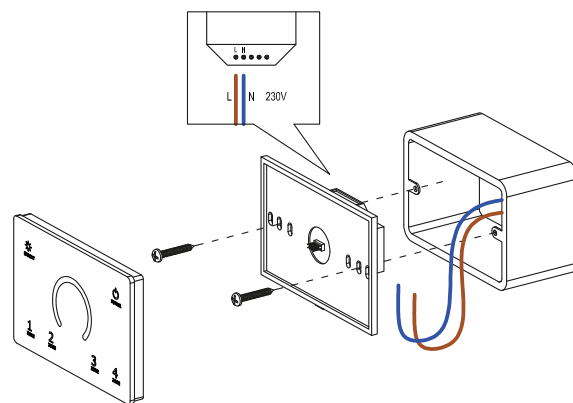
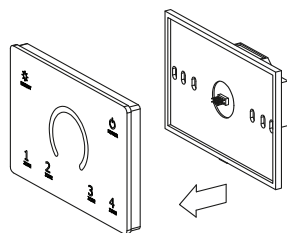
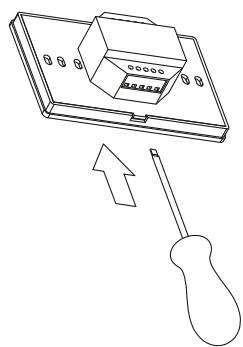
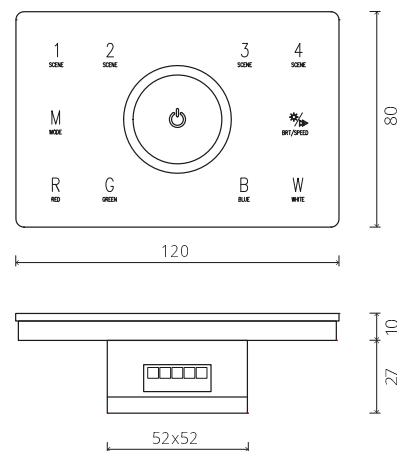


503 RGBW DIMMER - 4 ZONE



DISEGNO TECNICO TECHNICAL DRAWING:



CODE	Descrip.	Zone	Input-Output Signal	RF Signal distance (open air)	V Input	IP	mm
G01101	Touch panel per scatola a parete BIANCA	4	DMX512 - RF 2.4GHz	30m (RF)	100-240Vac	IP20	120x80xh37
G01102	Touch panel per scatola a parete NERA	4	DMX512 - RF 2.4GHz	30m (RF)	100-240Vac	IP20	120x80xh37

DESCRIZIONE / DESCRIPTION:

- Touch panel 4 zone
- Per installazione su scatola standard 503 2 e 3 moduli
- Idoneo sia per DMX512 standard che per RF 2.4GHz
- Placca in vetro ultra sensibile touch
- Funzione memoria

CERTIFICAZIONI / CERTIFICATIONS:

CE √RoHS EMC